



schlatter

Peak performance
that pays off for
decades

Leading system provider for
more than 100 years

The secure connection



Leading the way with innovation and experience

The Schlatter Group stands for decades of expertise in mechanical and plant engineering. With our experience and innovative strength, we develop solutions that impress with their quality and technical excellence – and set new standards for the future of industry.

Wire welding
systems
15



Weaving
machines
19



- 4** Company
- 6** Worldwide
- 7** Partnership
- 8** Employer
- 10** Product overview



Rail welding
systems
13



Wire processing
lines
17

- 20** Applications
- 23** Customer Service
- 24** Contact

The Schlatter Group

A leading system provider for the wire industry, track construction and the PMC industry for over 100 years.

Machine and plant solutions that make a difference

The Schlatter Group stands for pioneering technology and modular system solutions in the welding and weaving sectors. Our machines are long-term investments because they combine efficiency, durability and high cost-effectiveness, offering customers worldwide measurable added value. Personal advice and reliable service make all the difference in everyday life.

Long-term partnerships that build trust

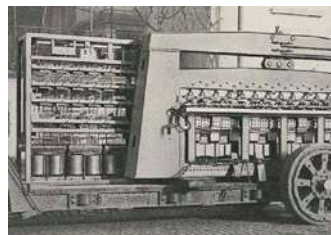
Our plants and system solutions connect materials, people and companies, creating a reliable foundation for trust and economic stability. This results in sustainable success that extends far beyond the individual project and has an impact for many years to come.

History - Innovation and tradition since 1916



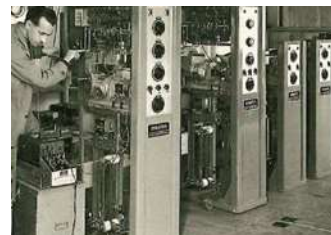
Foundation and early years

Founded in 1916 by Hans A. Schlatter, the company has undergone impressive development over the years, characterised by a pioneering spirit and technical innovations, and is now a leading global supplier of system solutions in resistance welding and weaving technology.



International success

In the 1930s, a partnership with the American company Microweld enabled Schlatter to access the global market and supply numerous industries. After the Second World War, the development of mesh welding machines marked a major breakthrough.



Technological expertise

Schlatter recognised early on the importance of intelligent control technology for optimal welding processes. In-house developments such as the Synotron load balancing device and the first rectifier welding machine set new standards, acted as a growth engine and strengthened the company's market leadership.



Global technology leader with an eye to the future

As a global technology leader in resistance welding and machine weaving, the Schlatter Group combines over a hundred years of experience with innovative strength and customer focus. Development centres, production sites and service organisations on several continents ensure short distances and direct support.

This results in solutions that increase productivity, ensure quality and further develop our customers' production in a future-oriented manner, keeping them competitive in the long term.

Investing in a sustainable future

The Schlatter Group continuously invests in energy-efficient technologies, digital solutions and modern infrastructure in order to conserve resources and permanently increase the performance of its systems. We provide targeted training for our employees and improve processes step by step which results in solutions that combine economic success with ecological and social responsibility in everyday life.

In this way, we create sustainable added value for customers, partners and regions worldwide.

Global presence

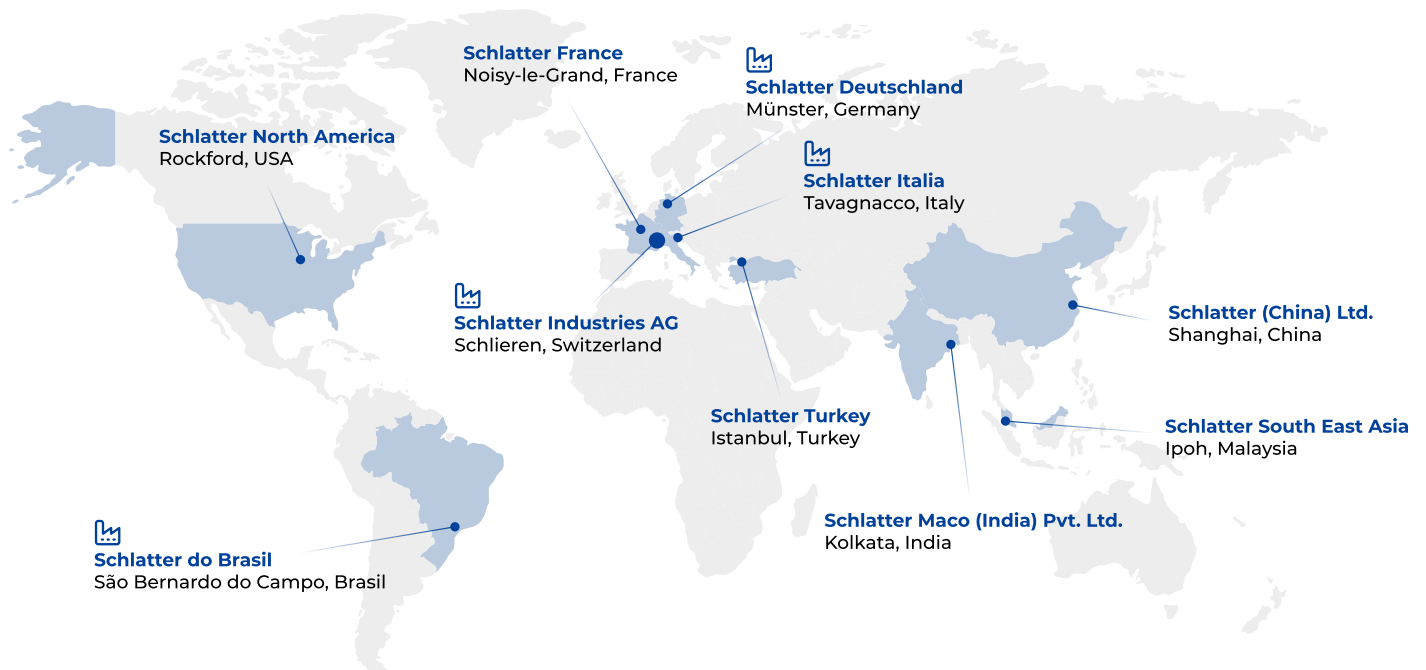
We are committed to customer proximity on a global level and support you with industry-specific advice in several languages.

Our organisation is geared towards offering you maximum proximity and availability – with production sites in Switzerland, Germany, Italy and Brazil, as well as subsidiaries in Europe, North America and Asia.

Thanks to this global presence, we are exactly where you need us – fast, reliable and with in-depth expertise in your industry.

Rely on our international service and benefit from our proximity, short distances and global expertise.

Our locations around the world



Global network

Thanks to our sales partners and agents around the world, we are able to provide our customers with close and timely support worldwide.

Strong partnership

We think long-term: in our customer relationships, in the development of systems and in the management of the company. You can rely on us for the long term.

As a dependable partner, the Schlatter Group pursues clear, transparent corporate governance and openly informs investors and interested parties about developments, key figures, dates and sustainability performance.

In this way, we build trust, enable informed decisions and strengthen a

stable basis on which customers, partners and shareholders can jointly create long-term value.

Continuous reporting, active dialogue and responsibility in everyday life form the foundation of this strong connection.



Transparency



As a company listed on the SIX Swiss Exchange, we value openness and transparent communication.

Find out more: [Investor Relations](#)

Long-term thinking



Our strong core shareholder base with an industrial background ensures stability and sustainable development.

Find out more: [Investor Relations / Share](#)

Strong foundation



Operating prudently and with foresight we consider a healthy balance sheet not as a goal, but as a fundamental prerequisite.

Find out more: [Investor Relations / Publications](#)

Working at Schlatter: More than just a job

We don't make a big deal out of it, but those who work at Schlatter often stay for many years.

Is there one good reason to work for the Schlatter Group? No, there are several: exciting and varied jobs in various sectors, a lot of personal responsibility, development opportunities and flexibility. And that's by no means all of them.

At the Schlatter Group, genuine team spirit counts. We want to do a good job together and have fun doing it. This includes straightforward dialogue with superiors on an equal footing, respectful interaction and a positive error culture in which mistakes can be learned from. We work together across departments to advance the big picture and strengthen our leading position in the market.



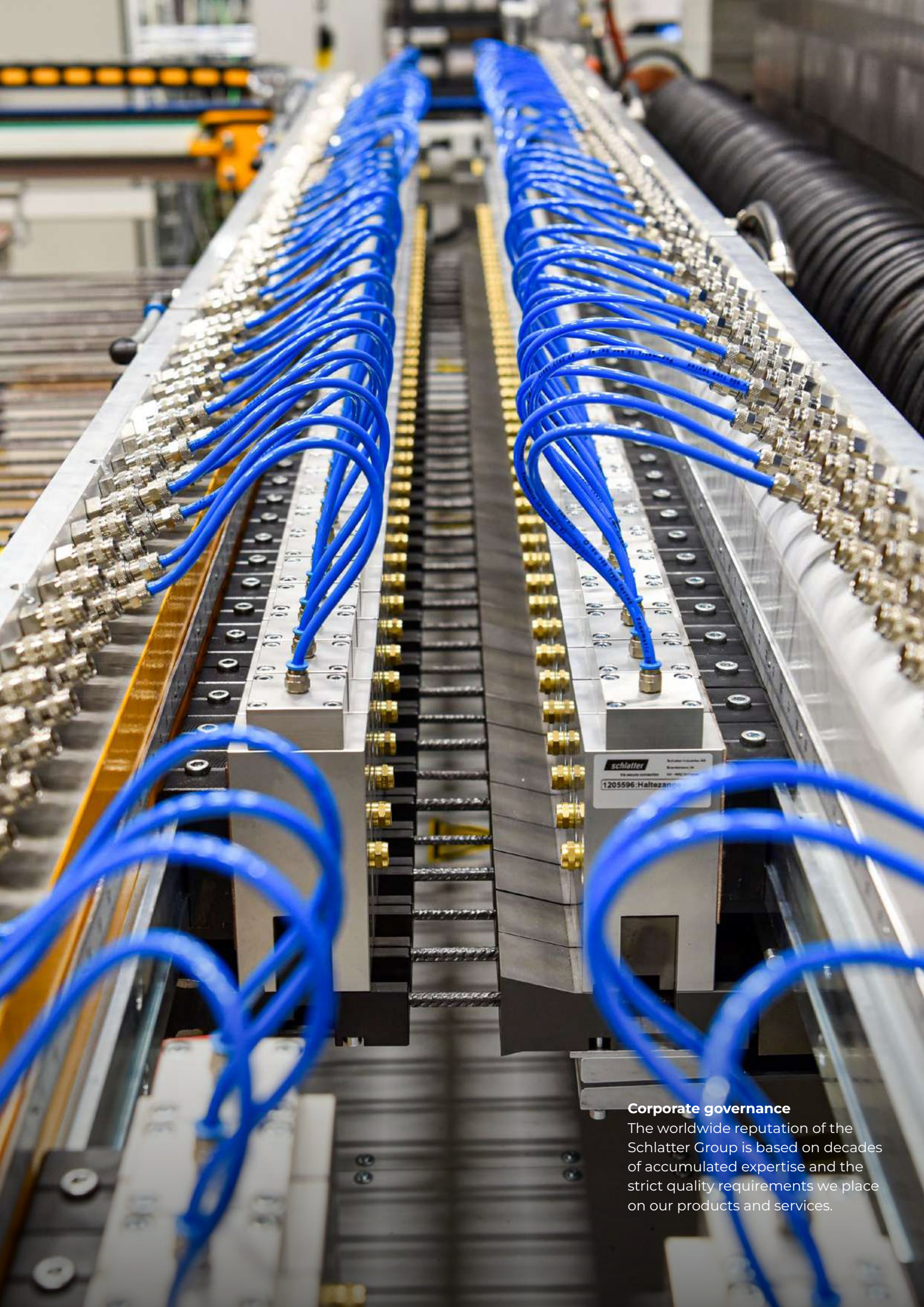
An employer with
vision and a clear
mission.

Our vision

Our aim is to be the first choice worldwide for high-quality, modular and efficient solutions – the best investment for the maximum economic success of our international clientele.

Our mission

At the Schlatter Group, we focus on pioneering technology, reliable quality and outstanding service every day in order to develop the most economically profitable modular system solutions. As a leading supplier in machine and plant engineering, we offer our global clientele not only first-class machines, but above all future-oriented investments. With our comprehensive industry know-how and expert knowledge, we create high-end plants and systems that generate sustainable value through longevity and efficiency, reduce operating costs and ensure maximum profitability – the best solutions for long-term success.



Corporate governance

The worldwide reputation of the Schlatter Group is based on decades of accumulated expertise and the strict quality requirements we place on our products and services.

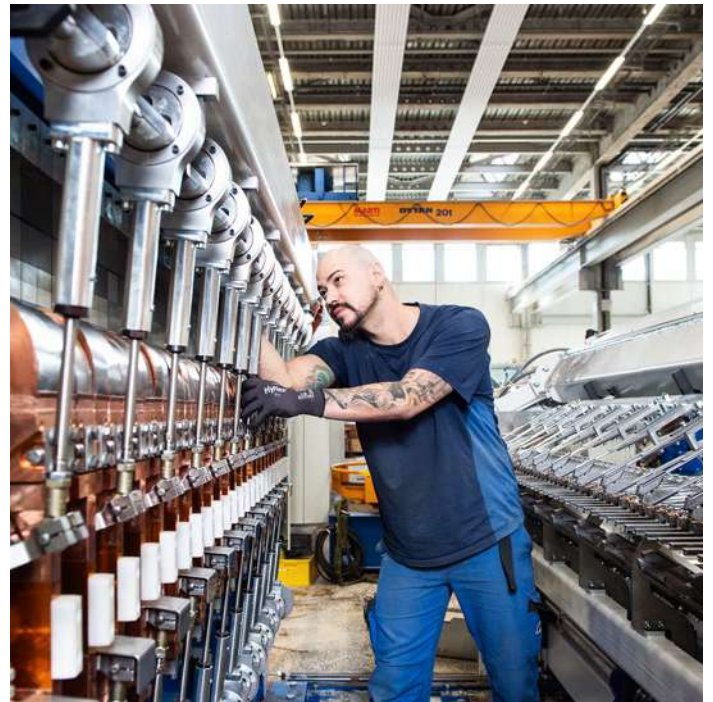
Our products

Innovative and powerful machines and systems for track construction, wire and PMC industry.



Rail welding systems

We develop first-class stationary and mobile rail welding systems for welding railroad tracks. These rely on the proven flash butt welding process, which is considered the most reliable joining technology in track construction. With this pioneering technology, we are the world's leading provider of rail welding solutions and a guarantor of the highest quality and efficiency in track construction.



Wire welding systems

In the field of wire welding, we develop and manufacture high-performance resistance welding systems. Our solutions are used in the production of reinforcing mesh, industrial mesh and fences. Thanks to the modular design of our welding systems, you receive a tailor-made solution. This ensures maximum efficiency and cost-effectiveness.



Wire processing lines

Our cold rolling, drawing, stretching and respooling lines set new standards in wire processing and meet the highest demands for safety, reliability and efficiency. The wide range of state-of-the-art systems enables the processing of reinforcing steel and quality wires to the highest standards, optimally tailored to further processing or distribution.



Weaving machines

We supply machines for the PMC industry and wire weaving technology: weaving, finishing and warp preparation machines for paper machine clothing (forming, press and dryer fabrics). Our C-TEC weaving machine enables heavy technical fabrics with high weaving tension that conventional textile machines cannot achieve.

In the wire sector, we offer wire weaving machines for finest filter meshes and sieves through to heavy security meshes, as well as mesh weaving machines for heavy sieve meshes. Our range is supplemented by crimping machines for the precise processing of warp and weft wires.



Rail welding systems

Mobile and stationary flash butt welding systems and autonomous complete systems for railroad tracks.

Welding systems for switch factories

Our stationary rail welding systems enable high-precision welding of switch components, including wear-resistant manganese steel.



Welding systems for long rail factories

Our stationary rail welding systems connect short rails to continuous welded rails of up to 500m and more. The flash butt welding machines form the core of a welding plant.



Mobile complete systems

For mobile welding of continuous track, our welding machines are integrated into autonomous systems with power generator, hydraulics, cooling and lifting/lowering device.



Mobile welding machines

Our mobile flash butt welding machines guarantee precise rail alignment and high welding force with minimal tolerances – ideal for all applications including high-speed and freight train lines.



Learn more about the product features of the various systems.

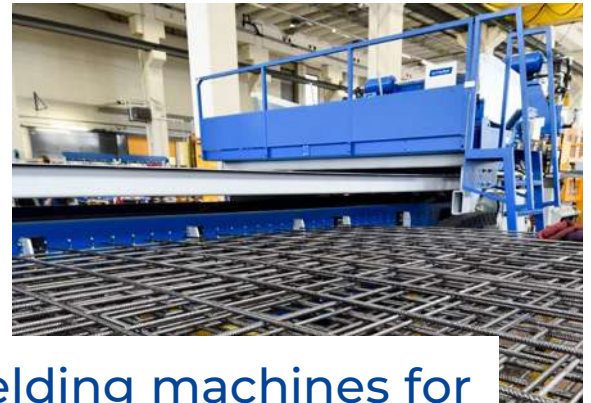


Wire welding systems

Thanks to the modular design of our welding systems, you receive a system that is optimally tailored to your individual requirements.

Welding machines for industrial mesh and fences

In the industrial mesh and fences product area, we specialize in the manufacture and development of welding machines for the efficient production of a wide range of mesh designs and fences in small and large batch sizes.

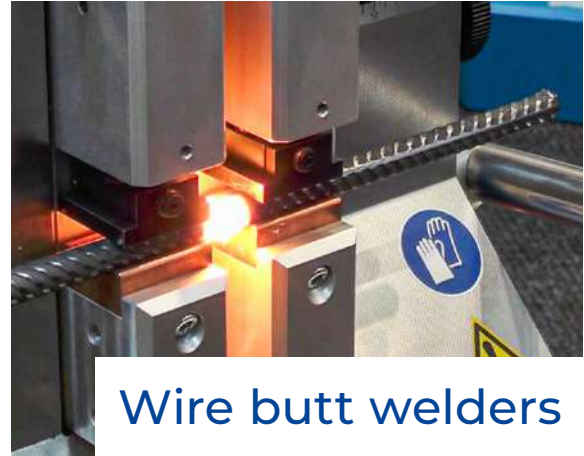


Welding machines for reinforcement mesh

In the reinforcement mesh product area, we specialize in the construction of systems for the efficient production of simple and complex reinforcement mesh in a wide variety of geometries.

Wire straightening and cutting system

Our powerful wire straightening and cutting systems ensure precise and highly productive wire processing.




Wire butt welders

Our wire butt welders impress with their outstanding tensile strength and consistently high quality welded joints.



Learn more about the product features of the various systems.

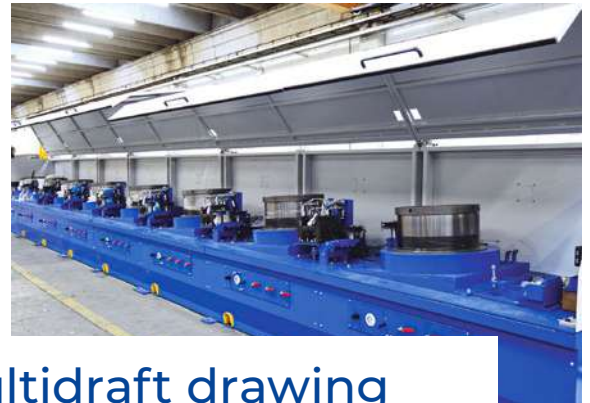


Wire processing lines

Innovative technologies for the
highest standards in wire processing.

Cold rolling lines

Our cold rolling lines produce smooth or ribbed steel wire for concrete reinforcement and industrial applications.



Multidraft drawing lines

Our multidraft drawing lines enable precise drawing and rolling of small wire diameters.

Stretching and respooling lines

Our stretching and respooling lines produce highly elastic, resistant reinforcing steel wire using state-of-the-art technology.



Learn more about the product features of the various systems.

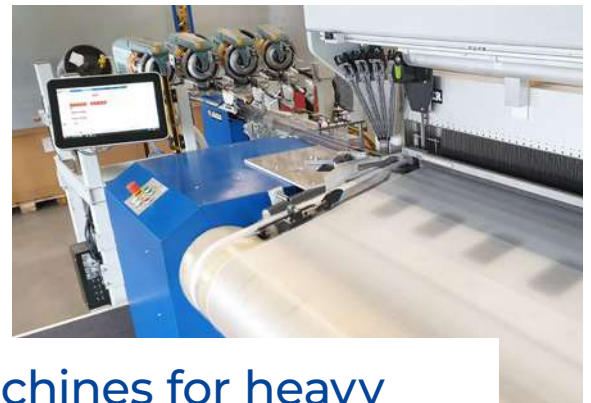


Weaving machines

Innovative weaving machines for the PMC industry, technical fabrics and wire cloth.

Machines for the PMC industry

Our weaving and finishing machines produce high-quality fabrics that are reliably used on the most modern and fastest paper machines in the world under the toughest conditions.



Machines for heavy technical fabrics

Our C-TEC weaving machine sets new standards in the production of heavy, high-density fabrics.

Machines for crimped mesh and wire fabrics

With our crimping machines and wire weaving machines, we provide you with the perfect complete solution for economical and future-proof production.



Learn more about the product features of the various systems.

Applications

Our innovative systems for welding technology, wire processing and weaving technology are versatile and can be optimally adapted to your production requirements.



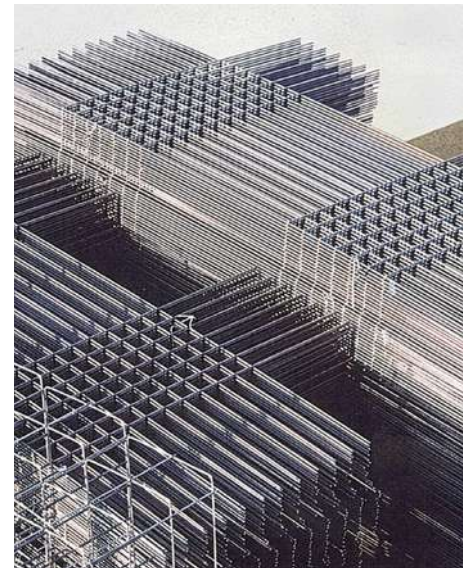
Rails and switch products

Our mobile and stationary machines are used in long rail plants, switch plants and for mobile rail welding and ensure reliable connections for rail traffic.



Industrial mesh and wire products

Whether cable trays, deck mesh, shopfitting, fences, machine fences, room dividers, gabion grids or stone baskets: our systems offer the right solution, meet the highest quality standards and can be flexibly adapted to your requirements.



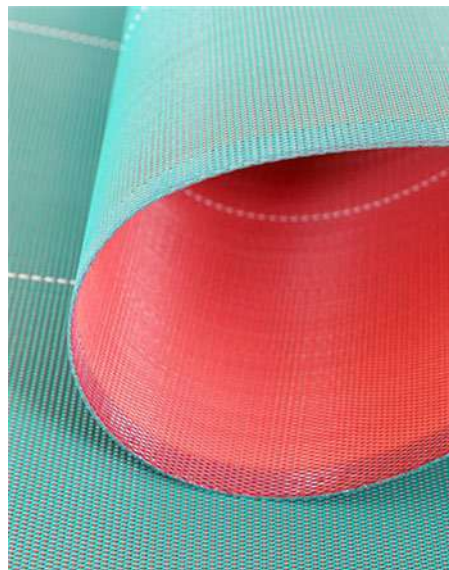
Concrete reinforcement

Our high-performance systems enable the precise and efficient production of standard meshes, list meshes, column reinforcements, reinforcement cages and wire and bar products.



Steel wires

Our machines are ideal for processing bare wire, ribbed wire and stretched wire. With a focus on efficiency, precision and durability, our systems set new standards in wire production.



Paper machine clothing

Our innovative machines enable the production of all modern multi-layer fabrics. Our portfolio includes the production of forming, press, and dryer fabrics as well as industrial filters.



Technical fabrics

In the area of technical fabrics, we offer specialized weaving machines that have been developed for the production of heavy technical industrial fabrics with the highest requirements.



For your systems to work reliably and economically

With the Schlatter spare parts service, you can ensure that your systems always work reliably and efficiently. High-quality spare parts are essential for operational reliability, especially in today's world where plants and systems are becoming increasingly complex.

Customer Service

Increase productivity and system service life with Schlatter – your reliable partner for first-class customer service.



Helpdesk

Fast and competent assistance with technical questions



Spare parts service

Quality and availability that convinces



Service Contracting

Our Service Contracting combines the best of the analogue and digital worlds. Regular on-site inspections and precise system calibrations by our qualified technicians ensure the long-term performance and value retention of your system. At the same time, digital service components enable continuous monitoring and support – anytime, anywhere.



Dashboard

Your production in view at all times



MySchlatter.com

With MySchlatter.com, Schlatter's user-friendly service portal, you always have an overview of your systems and spare parts. Our innovative web store with integrated spare parts catalog allows you to order spare parts at the click of a mouse and thus efficiently design your internal processes.



Upgrades

Modernise your plant for maximum performance and service life



Field Service

Expert support directly on site



RemoteSupport

Your direct line to quick assistance

And much more...



Contact

Global presence, local proximity: with production sites in Europe and subsidiaries worldwide, we provide you with reliable support in the form of industry-specific advice and expert service.

Switzerland

Schlatter Industries AG
Brandstrasse 24
CH-8952 Schlieren
T +41 44 732 71 11
info@schlattergroup.com

Germany

Schlatter Deutschland GmbH & Co. KG
Hessenbusch 157
DE-48157 Münster
T +49 251 7792 0
deutschland@
schlattergroup.com

France

Schlatter France S.a.r.l.
Immeuble ATRIA, 2,
rue du Centre
FR-93885 Noisy-le-Grand
T +33 1 4305 4545
france@schlattergroup.com

Brazil

Schlatter do Brasil ind. e Com. de Máquinas de Soldar Ltda.
Rua Silva Bueno, 107,
Alvinópolis
BR-09891470 São Bernardo do Campo
T +55 11 4125 4443
brasil@schlattergroup.com

USA

Schlatter North America
4640 Colt Road
US-Rockford IL 61109
T +1 815 874 9471
F +1 815 874 8585
northamerica@
schlattergroup.com

Malaysia

Schlatter South East Asia Sdn. Bhd.
No 61 Jalan Perindustrian Silibin 1, Kawasan Perindustrian Ringan Silibin, MY-30100 Ipoh, Perak
T +605 5287600, 5267600
F +605 5283600
sea@schlattergroup.com

China

Schlatter (China) Ltd.
Room 402, Building 1,
1502 Long Wu Road,
CN-200231 Shanghai, China
T +86 (0) 135 2162 2024
china@schlattergroup.com

India

Schlatter Maco (India) Pvt. Ltd.
2/5, Sarat Bose Road
Sukhsagar Building,
7th Floor, Room No-7 A
700020 – Kolkata, India
T +91 (98) 3120 54 81
india@schlattergroup.com

Italy

Schlatter Italia S.r.l.
Via Nazionale n. 130
33010 Tavagnacco (UD), Italy
T +39 (0432) 1698446
italia@schlattergroup.com

Turkey

Schlatter Turkey
Ömer Avni Mah. Emektar Sok.
No: 24, Zenel Apt., Kat: 3, D: 10
34437 Beyoglu – Gümüssuyu/
Istanbul, Turkey
T +90 212 243 97 14
turkiye@schlattergroup.com