

To our customers

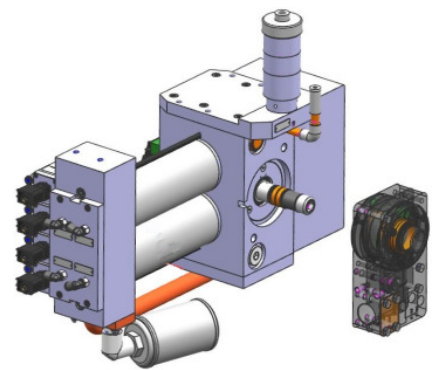
Schlieren, April 2016 / Jac

Discontinuation of the pneumatic actuator for the Syrocut shear

To whom it may concern,

With this correspondence, Schlatter Industries wishes to inform you about a new product innovation in the area of wire cutting. We now offer a new electric motor drive for the cutting head of the Syrocut straightening and cutting machine. The shear is an integral part of the Syrocut you have purchased.

The former pneumatically operated drive for the shear head will be discontinued due to the new upgrade solution. The hydraulically operated drive for the shear head is not affected by this discontinuation, but it can also be replaced by the new electric drive (up to and including 8mm diameter wire).



1) Pneumatic drive and cutting head

No.	Drive type for shear head	Versions	Availability
1	Pneumatic	Drive (complete)	Up to 31 October 2017
2		Spare parts for the drive	Up to 30 November 2019*
3		Overhaul of the drive	Up to 30 November 2019*
4	Hydraulic	Drive, spare parts, overhaul	Available until further notice
			* Dependent on the availability of the individual parts

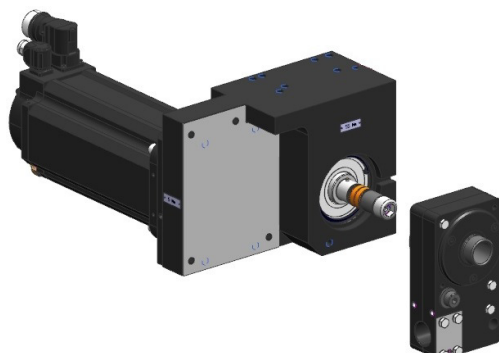
1 Compatibility

On the mechanical side, the electrically powered drive is fully compatible with the pneumatic predecessor, both in terms of the mounting on the Syrocut cantilever and of the drive shaft to the cutting head. The existing cutting head can therefore continue to be used. The drive controller for the electric motor is installed in the existing Syrocut control cabinet (with appropriate space) and connected to the drive using pre-assembled cables. No adjustments or changes are necessary in respect of the system controller or control of the Syrocut, when changing the shear drive.

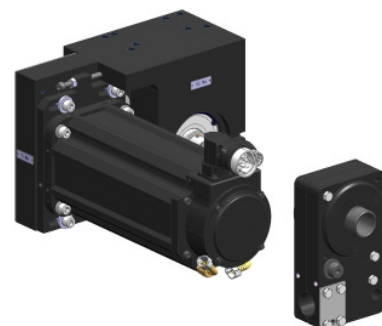
2 Exchange

Exchange or installation of the new components for the electric drive solution is carried out in full by a Schlatter service technician within a few days. This ensures that the production downtime for the Syrocut is kept to the minimum and that proper functioning of the Syrocut is fully restored after modification.

No.	Component	Versions	Comment
5	Electric motor drive	Motor mounted on the left side	Drive is located on the left** side of the shaft for the shear head (looking toward the wire feed)
6		Motor mounted on the right side	Drive is located on the right** side of the shaft for the shear head (looking toward the wire feed)
7	Motor drive controller	-	Footprint in Syrocut control cabinet approx. 380mm x 460mm (WxH)
8	Motor cable (pre-assembled, standard lengths)	Available lengths: 10m, 15m, 20m, 25m	Electrical connection from the controller in the control cabinet to the motor of the shears drive. The minimum length is determined based on the conditions on site (distances via the cable trays, etc.).
			** When the drive alignment is unclear, please send us a photo of the existing pneumatic drive from a distance of approx. 1-2m with the perspective as indicated in Figure 1).



5) The electric motor drive (left) with shear head



6) The electric motor drive (right) with shear head

The electric drive offers the advantages of being maintenance free and subject to very little wear (only drive belts and bearings) in comparison to the pneumatic/hydraulic drive. The electric drive is further distinguished by its low noise level and by having a power consumption in operation that is at least 75% lower. The cutting speed is at least equivalent or higher. The purchase price of the electric motor solution is similar to that of a pneumatic drive including an overhaul.

No.	Optional Components	Item number	Comment
9	Shear head	070570	Replacement shear head (complete)
10	Shear blade (in shear head)	070675.nm***	Replacement blade (counterpart to the cutting sleeve)
11	Cutting sleeve (in shear head)	070643.nm***	Replacement cutting sleeve (counterpart to blade)
			*** Suffix (nm) of the item number is dependent on the wire diameters to be cut

3 Action and Recommendations

Please check the Syrocut machines that you operate, for any potential requirement. If you have any questions about the new drive design for the Syrocut shear, please contact us. Our help desk will very happy to assist you further. You can reach us by calling Tel. +41 (0) 44 732 74 20. For a quote or to place an order, please contact our spare parts service via Tel. +41 (0)44 732 71 11 or via E-Mail at ersatzteile@schlattergroup.com.

Kind regards
Schlatter Industries AG



Carsten Janke
SH upgrades
Tel. +41 (0)44 732 73 04
carsten.janke@schlattergroup.com