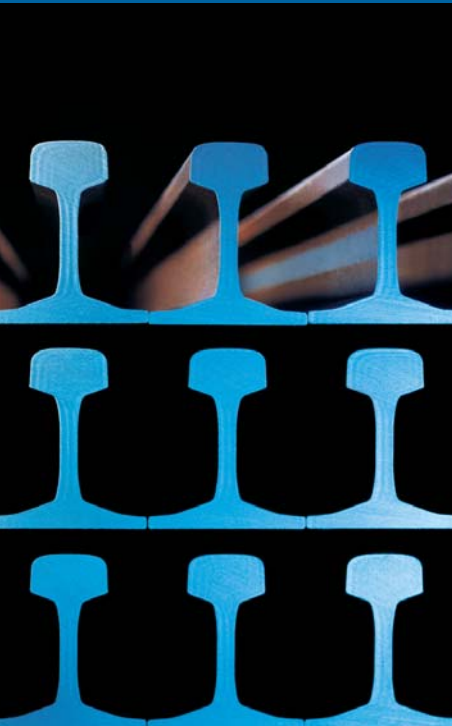


Stationary  
Welding Systems for Rails



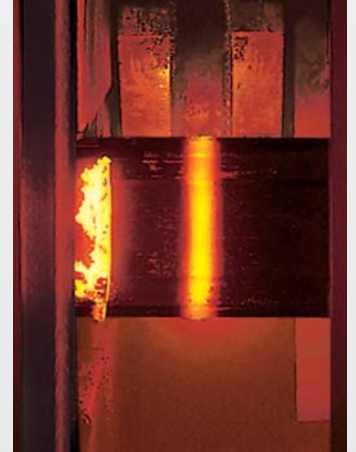
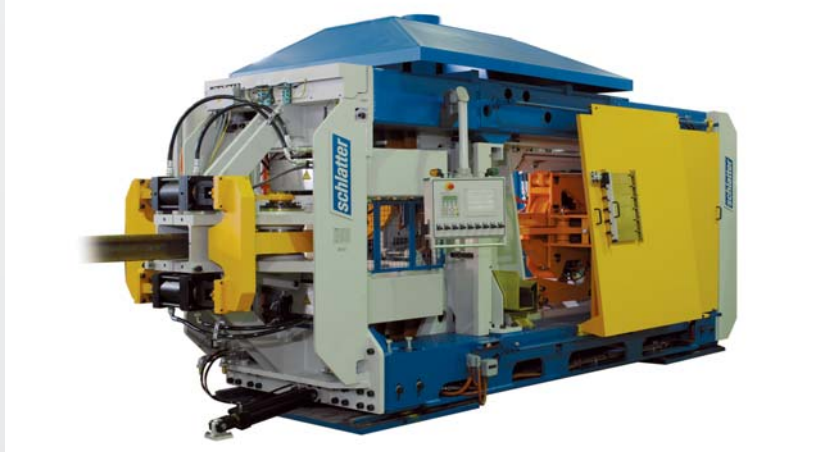
Schlatter

***schlatter***

The secure connection

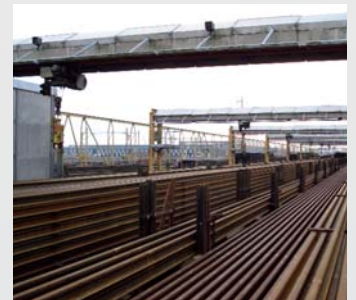
# Flash Butt Welding Systems

## **System GAAS80 for the production of Long Welded Rails from Short Rails**



The machine Schlatter Type GAAS80 was developed for the economical production of Long Welded Rails from Short Rails.

- Short Rails: from approx. 6 m
- Long Welded Rails: up to approx. 500 m
- Welding Range: from approx. 43 kg/m up to approx. 75 kg/m.
- Automatic lateral and vertical prealignment with 4 aligning arms.  
The operator may adjust the alignment manually if necessary.
- Lateral alignment on the running edge selectable: left, right, center of the web.
- Pivoting electrodes – optimum contact between electrodes and rails, no burnings on rail head and foot.
- Clamping in the web – no damage on rail head and foot.
- Incorporated deburring unit, the rail ends remain firmly clamped during the deburring process. Staggered blades allow easy removal of the remains.
- Deburring arms for rail head and foot with copying rolls – minimum time and costs for grinding.
- Guiding system of the movable machine part with hanging plates, completely insensitive against spatters and heat.



**Stock of Long Welded Rails with 500 m length.**

## **System GAA100 for the production of turnout components**



The Schlatter GAA100 is designed for welding components for Turnouts.

- Big welding range, for rail steel up to approx. 16'000 mm<sup>2</sup>.
- Open front side for easy loading and positioning of workpieces.
- Welding of various alloys incl. material combination Mn-CrNi-Rail.
- 4 clamping units with 1000 kN clamping force each prevent the workpieces from slipping.
- Lateral and vertical adjustment +/- 5 mm under full clamping force.

# for Rails



**Welding of various alloys used for turnouts, including Mn-CrNi-Rail**



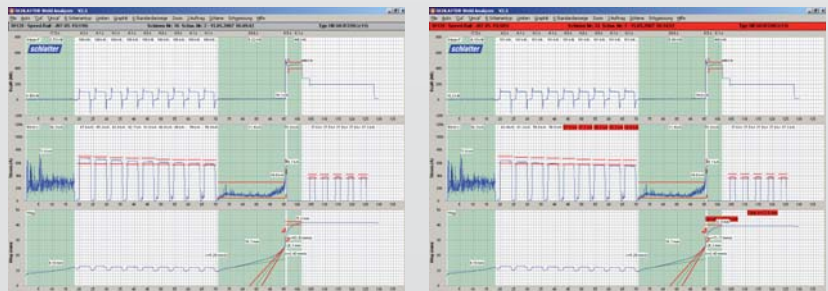
**GAA100/580 for Turnouts**



**The welding system consists of:**

- Welding machine GAAS80 or GAA100
- Control system with function control, weld processor and Schlatter Weld Analyzer.
- Hydraulic unit
- Power cables and control cables between control cabinet and machine.
- Hydraulic pipes between machine and hydraulic unit.
- Optional: Cooling water recoler with closed circuit.

**Control Cabinet housing: Function Control, Weld Processor and Schlatter Weld Analyzer.**



The newest generation of Schlatter Weld Analyzer contributes to achieving constant high quality welds. It monitors and records the three main parameters force, current and travel as well as the time and shows them directly on the color screen during welding. Tolerance fields can be defined and as soon values are out of the tolerance there is a warning indication for the operator.

## **H.A. Schlatter AG**

Schlatter is the leading machine manufacturer world-wide for individual solutions in the field of resistance welding. With innovative plants and exceptional services we earn the confidence of our customers every day. Since its founding in 1916 Schlatter has pioneered and extended its core competences welding techniques, mechatronics and system technique. Innovation, quality, service and high product safety are the four most important attributes for our up-to-date solutions. Thanks to the modular construction, our plants can be tailored and upgraded to meet individual requirements at any time. For our customers this means security over the complete range – right from the beginning.

## **Service for your benefit**

The range of services offered by Schlatter is designated to increase your productivity and to increase the life time of your plant. Our multi-lingual helpdesk team answers your questions and assists you in eliminating malfunctions – by telephone or via Internet. Our field service specialists offer world-wide competent support in the field and take care of a variety of tasks. Furthermore, we have our own workshop for repair works and overhauls of your control units and mechanical components. An efficient spare parts service and versatile training courses complete our services. We shall be pleased to discuss with you your individual requirements and offer you a tailor-made service package.



### **Helpdesk**

*Do you have any questions?*



### **Spare parts service**

*Do you require any spare parts?*



### **Field service**

*Do you require any help in the field?*



### **Repair service**

*Is there anything we can repair for you?*



### **Training**

*Do you require in-depth training?*



### **Service contracts**

*Do you want to increase your productivity?*

**Your direct line to our services:**

**Helpdesk, field service, training, service contracts**

**+41 44 732 74 20 [service@schlatter.ch](mailto:service@schlatter.ch)**

**Spare parts and repair service**

**+41 44 732 71 11 [spareparts@schlatter.ch](mailto:spareparts@schlatter.ch)**

H.A. Schlatter AG

Brandstrasse 24

CH-8952 Schlieren

Tel. +41 44 732 71 11

Fax +41 44 732 45 50

[www.schlatter.ch](http://www.schlatter.ch)

**schlatter**

The secure connection